



Askham Village Community - Excellence in Care

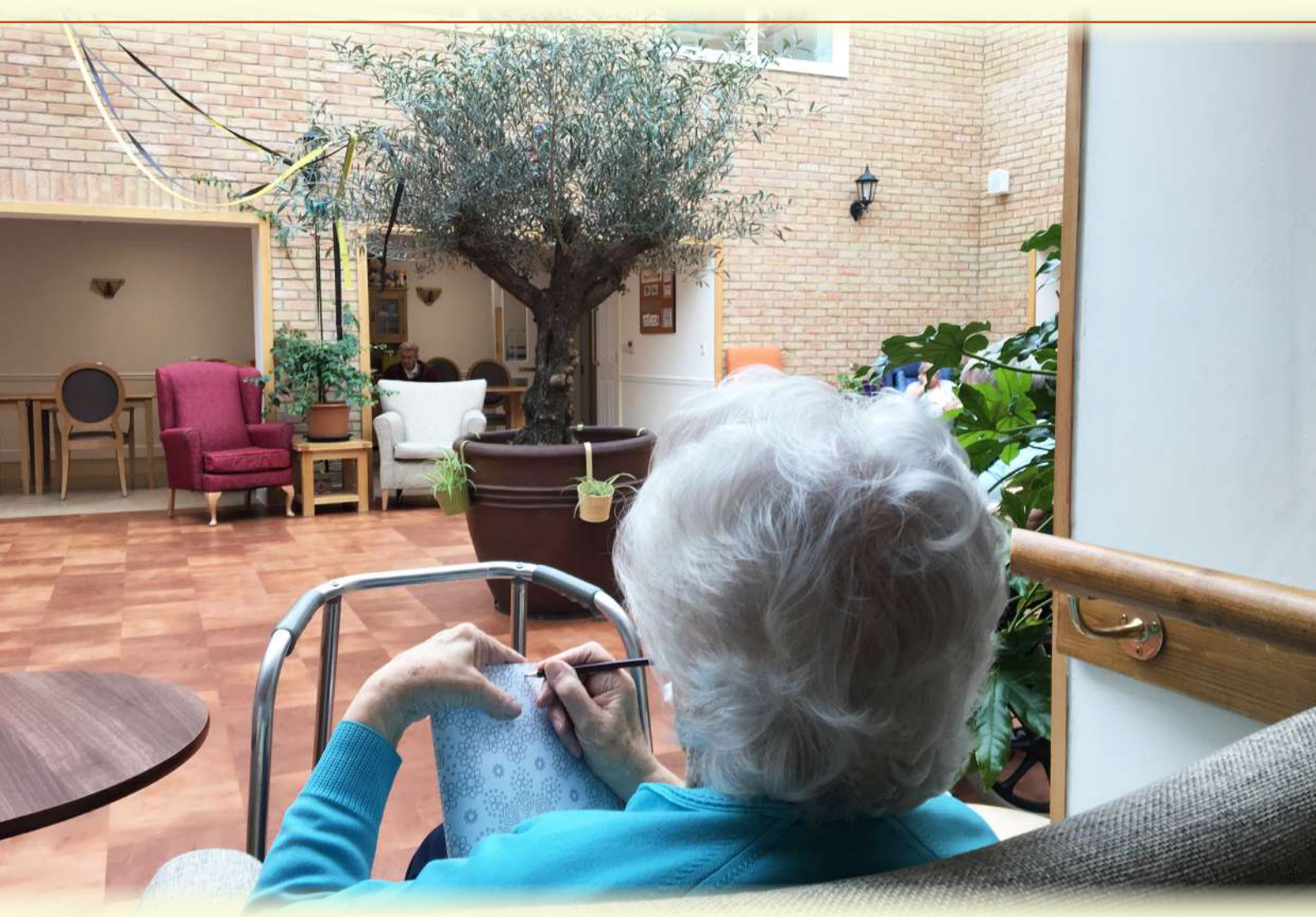
Set in seven stunning acres in rural Cambridgeshire, Askham Village Community is a group of five specialist care homes with on-site services and amenities that are designed to make the whole place feel like a small, friendly village in which to live.

Facilities include a café, shop, beautiful landscaped gardens, a state-of-the-art physiotherapy gym and a hydrotherapy pool. You need only look around to see that the extensive gardens and stunning courtyard are the heart of the community at Askham, and play a pivotal role in this modern approach to care.

Understanding that access to nature is vital for mental and physical wellbeing, each of the five specialist homes overlooks the 'World Gardens'. Exotic plants and flowers and cultural designs from around the world bring sights, sounds and smells gently into everyday life.

Every room has a large, landscape window by the bed which looks out over beautiful scenery. So, no matter the weather or the time of year, residents can watch as the seasons bring subtle changes in colour, texture and wildlife. The gardens are also open to public and visitors will often meet and chat to residents.





“

*Nature is so good for us, it can help to ease away tension, calm a busy mind and soothe the soul.
Sights, sounds and smells in the garden can trigger happy memories and remind us of
wonderful experiences.*

”

Aliyyah-Begum Nasser, Director





Askham House

*A purpose-built home, designed to support
and enable people with nursing needs
or Dementia.*

Askham House

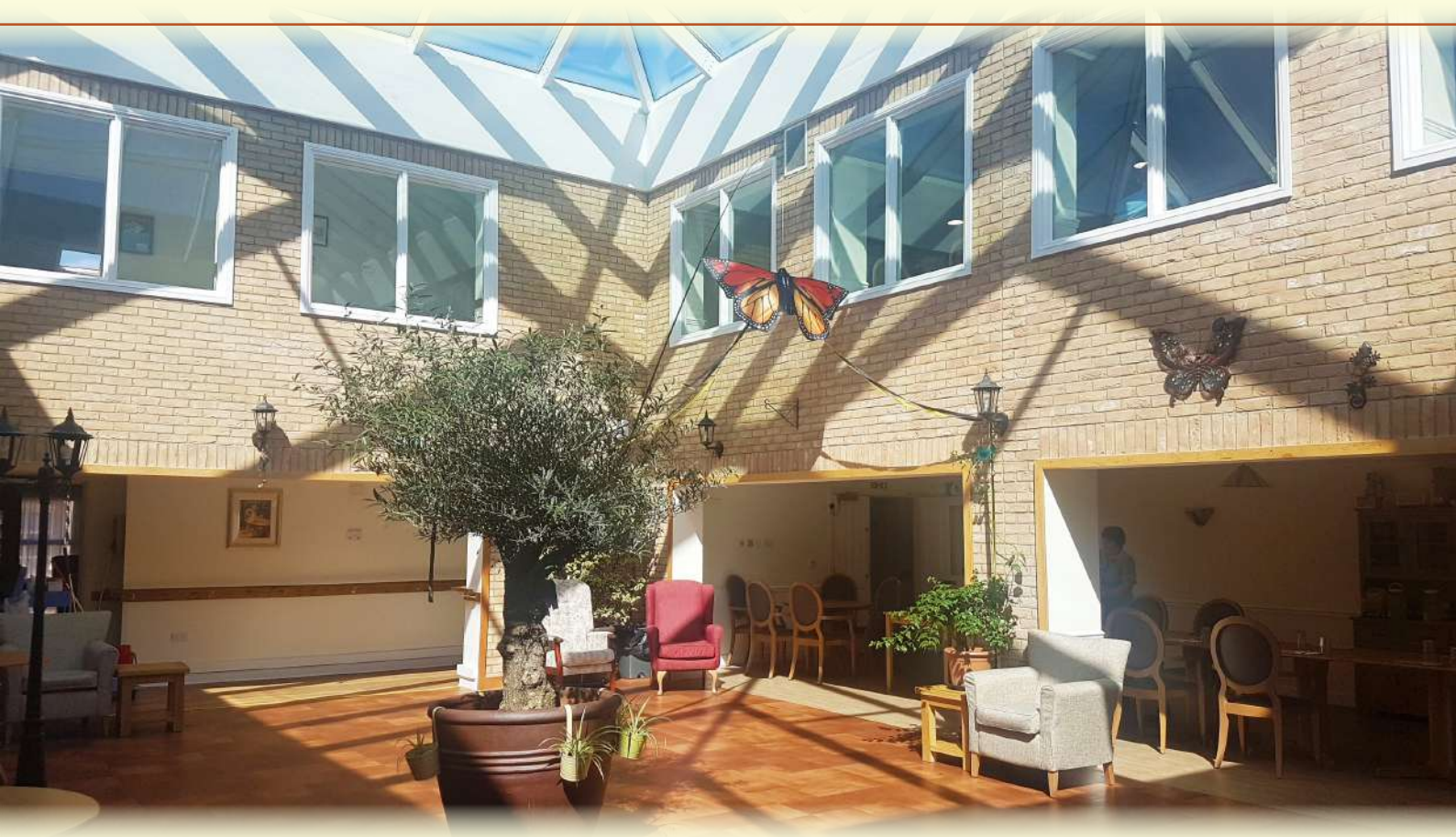
A purpose-built home, designed to support and enable people with nursing needs and Dementia.

Originally a stately home, Askham House has been expertly renovated to preserve its beautiful period charm whilst incorporating the latest technology, equipment and Dementia-friendly features.

Large windows and generous communal spaces create a comfortable environment for residents to move around in. A secure entrance ensures the safety of our residents and promotes a traditional, homely feel to the building. All rooms are en-suite and the home also has assisted bathing facilities.

Plenty of natural light supports mental wellbeing and the extra insulation improves warmth and reduces noise. Colour schemes throughout the building have been chosen using the latest research to support residents to get around and recognise their surroundings as easily as possible. Our state-of-the-art sensory room also provides vital stimulation and some good old-fashioned fun for everyone!





- 29 en-suite rooms
- Dementia-friendly design
- Round the clock nursing care
- Expert staff including Dementia Champions
- Internal gardens and level access to green spaces
- State-of-art sensory room and other activity spaces



Our team of dedicated, compassionate carers at Askham House are Dementia specialists. We not only support and enable your loved ones with their current needs but recognise and adapt levels of care as conditions and symptoms change. Loved ones with Dementia deserve a safe, comfortable and fulfilling life with all the comforts of home. We're incredibly proud to say that Askham House provides exactly that.

We believe access to nature is paramount to a happy life. That's why, within Askham House is a beautiful internal garden; bringing all the advantages of an outdoor space, indoors! Residents can enjoy the sensory and aromatic experiences in the safety and comfort of the modern, double-height atrium.

“

You've enlightened us about Dementia and how we can cope as a family. I can now go home and feel mum is safe and I don't feel guilty... we can't believe how much she's so at home here.

”

Resident's family member



Askham Hall

*A home dedicated to providing peace,
dignity and care.*





Askham Hall

A home dedicated to providing peace, dignity and care.

Askham Hall provides care and comfort for all in a calm, peaceful environment. We are committed to preserving dignity whilst offering the very best in personalised care so that you can spend this precious time with your loved one knowing your loved one is in safe hands.

Each of our 26 rooms is en-suite with large, picture windows overlooking our beautiful gardens. The peace and tranquillity of the grounds are matched by the kindness and reassurance of

our carers. Experienced and highly trained, we understand the sensitivity and delicate care needs of those nearing the end of life. Our ground floor rooms all have independent access giving added privacy for visiting family and friends. There are a number of activities available for individuals to enjoy in their rooms or together in the lounges.





“

We could not have asked for anything more during Grandpa's last weeks.
For everything you did to support him, Askham will always be special for the family.

”

Resident's family member



- 26 en-suite rooms
- Experienced carers
- Regular activities for all
- Round the clock nursing care

“

Just a little note to say a heartfelt thank you for all the care and kindness you have shown. We know he was very happy and enjoyed all the activities, especially anything musical. He loved nothing better than a good old sing-song.

”

Resident's family member



Ways To Pay For Your Care

Providing clarity and confidence in the cost of care.

Everything we do at Askham is underpinned by our ethos of kindness, trust and respect; including our approach to fees. This means we don't put a standard price on care. Instead, fees are set on a case-by-case basis.

A detailed pre-admission assessment determines your own personal costs of care. We are happy to discuss individual circumstances to help set expectations and explain exactly how each and every care package is structured including funding contributions that you may be eligible for.



We pride ourselves on being a fully inclusive care community; we welcome residents who are funded by:

- Private or personal contributions
- Social Services
- NHS (Continuing Healthcare, Complex Case Teams, and others)
- Joint contributions from any of the above.





What Are Your Next Steps?

Finding the right care is a decision that's made by the heart, as much as the head.

We know that finding the right care for yourself or a loved one is a decision that's made by the heart as much as the head. Do reach out to get a feel for whether you can see yourself or your loved one living a happy life at Askham Village Community.

Give us a call (01354 740269) or email us (info@askhamvillagecommunity.com): we're happy to answer any questions and talk about you or your loved one's specific needs.

Come and visit: our gardens, café and salon are open to the public so why not pop along and have a little look around? You can chat to the residents and experience a little bit of Askham Village life in your own time.

Arrange a guided tour: if you'd like to look round in more detail, we'd be happy to arrange for one of our nurses to show you around our homes and specialist facilities.



*Askham Village Community is more than a care home.
It's a vibrant, social and caring community. We'd love you to be a part of it with us.*



@askhamvillagecommunity



@askham.rehab



@askhamvillage